

Building Sustainable Communities

Seminar four: Constructing longer term stewardship and governance



Context

Housing Green Paper

- Four existing growth points
- 29 'New growth points'
- Eco towns

Empowerment Agenda

- Quality of services
- Community empowerment
- Civic participation

Environmental sustainability Agenda

- CO2 reduction
- Tackling waste
- Behaviour change



Managing communities in the longer term

- Spectrum of possibilities for local authorities and their partners, ranging from neighbourhood charters, to parks trust, to development trusts that provide a whole range of services
- There might be some specific characteristics of new settlements that make management a particularly important factor in building long term sustainability, e.g. new technologies (perhaps energy generation) or public space with specific requirements



Ensuring sustainability

- Crucial considerations are that the model is **financially sustainable** in the long run and that it contributes to the area being **'more than the sum of its parts'**
- Important that a long term plan is incorporated into the project early on to ensure that any assets or revenue generating scheme are secure



Making the solution more than the sum of its parts

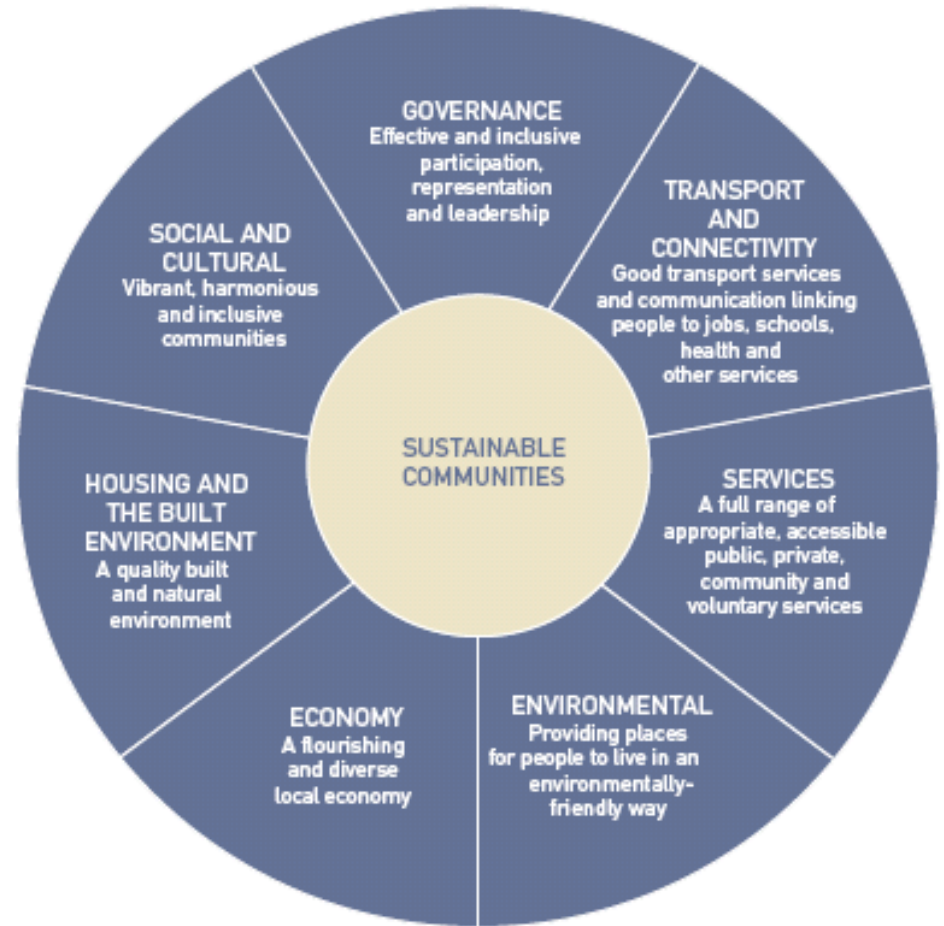
- Vital that whatever is put in place acts to bind the community and contributes to its sense of identity and community
- The marriage between successful management of assets and their ability to engage people in shaping their community is a **key opportunity**



What is a sustainable community: two views

1 Institutional

- Governance
- Social and Cultural
- Housing & the built environment
- Economy
- Environmental
- Services
- Transport & Connectivity

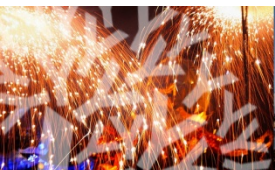


Source: Egan Review: skills for sustainable communities, 2004



2 An alternative view

- Physical boundaries to promote geographical identity
- Visible leadership
- Rules and laws specific to the area, e.g. car free areas
- Possibly shared belief system, e.g. garden cities, new towns, eco-cities
- Strong social relationships, networks & bonds
- Local myths & stories
- Rituals and rhythms



Aims of the seminars

To examine **transferable lessons** from previous experience

To stimulate **discussion** into the best ways forward

To **bring together** the **interests** that need to work together:

- Agencies (including the new Homes and Communities Agency)
- Housing providers
- Local authorities
- Third sector organisations



The four seminars

1. 28th April – London

Building forms of stewardship that encourage participation in new developments

2. 19th May - Birmingham

The tensions between national policy aspirations and what residents want

3. 2nd June - Manchester

The link between environmental sustainability and participation

4. 30th June – Milton Keynes

Constructing longer term stewardship and governance`



Agenda

- 10.00 – 10.15** Topic introduction
- 10.15 – 11.30** The Goodwin Trust and The Parks Trust, Milton Keynes
- 11.40 – 12.45** Salford's 'Spotlight' and work with the Seedley & Langworthy Trust
- 12.45 – 13.05** Thinking about the toolkit





Building Sustainable Communities



Peter McGurn

Goodwin Trust, Hull



Philip Bowsher

The Parks Trust, Milton Keynes



Chris Marsh & Martin Halton Salford



Thinking about the toolkit

1.

2.

3.

